

Background Colour Options

I have created this brochure for my clients to see a snapshot of the various background colours that you can choose from for your studio session. These are just a couple of example photos but there are plenty more if you would like to scroll through my previous portfolios on my website, link below;

<http://www.djparkervisionphotography.com/>

Please note that some of the backgrounds are not able to be used for full height/length or sitting/laying on the ground photos. This is because they are shorter backgrounds meant for waist/half height family shots or closer cropped in portraits. These are marked in red under each backgrounds name when applicable.

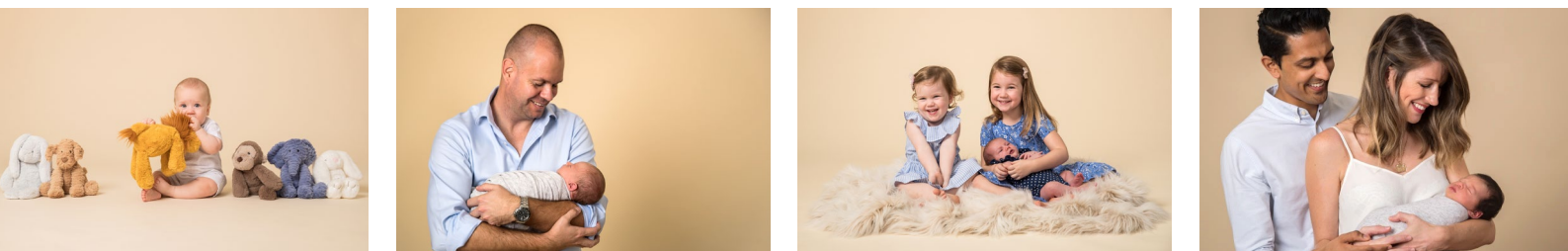
Pure Black

The pure black is a style of photography known as “low key” or “boutique” due to it’s creative lighting technique and feel. It creates a very stylish and contrasting photo between the bright highlights and dark shadows.



Light Cream

The light cream is great if you want something light like the white but with a bit of colour. Its subtle tone creates a beautiful soft feel to the photos and looks great in black and white too. The cream can be adjusted slightly for a lighter or darker finish depending on your preference.



Textured Olive Green

(Waist height or closer shots only, no full length or ground)

This is a hand painted canvas backdrop that is a blend of colours, using an olive-green base layer and a stony top layer. The textured style creates a background that is a bit more of a feature in the photos but still soft enough that it does not retract from yourself as the subject.



Textured Brown

(Waist height or closer shots only, no full length or ground)

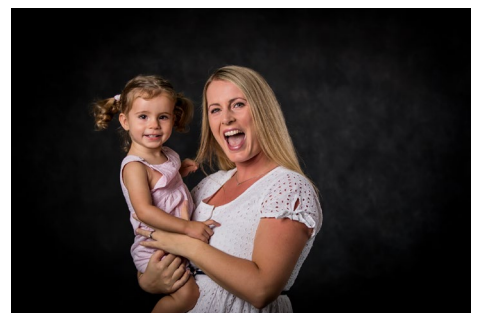
This is a hand painted canvas backdrop that is a blend of colours, using a dark brown base layer and a rusty orange top layer. The dark brown adds a really nice warmth to the photos and the blurry background makes you pop off the background.



Textured Black

(Waist height or closer shots only, no full length or ground)

This is a hand painted canvas backdrop that is a blend of monochromatic tones, using a pure black base layer and a light grey top layer. This can be a nice alternative to the pure black background because it creates a slightly softer photo.



Textured Cream

(Waist height or closer shots only, no full length or ground)

This is a hand painted canvas backdrop that is a blend of colours, using a light brown base layer and a cream top layer. This backdrop creates a lovely brighter toned photo with a subtle and warm texture.



Pure White

This is a more traditional style background that creates a “high key” effect with pure white behind and bright lighting. This background creates a lovely light, clean and crisp style of photos.



Dark Grey

The dark grey background can be a nice happy medium if you want something between black and white. Similar to the black it creates a very modern creative looking photo.



Light Grey

(Waist height or closer shots only, no full length or ground)

The light grey background is a good option if you still want a light colour feel but do not want pure white. It adds a little tone to the background without being dark.

